

US Wind Mariners Briefing – October 5, 2021

These briefings are intended to update mariners on marine operations in and around the US Wind Maryland offshore wind Lease area. Mariners briefings are distributed to interested mariners on our website at: <https://uswindinc.com/mariners/> or can be requested from Benjamin Cooper, US Wind's Director of Marine Affairs, via email at b.cooper@uswindinc.com.

You may also wish to contact US Wind's Fisheries Liaison Officers for fisheries specific information (Wolfgang Rain: 206-427-6553; wrain@searisksolutions.com and Ron Larsen: 570-242-5023; ronlarsen@searisksolutions.com).

About Us

US Wind was founded in 2011 and has established its position as Maryland's leader in offshore wind development. In 2014, US Wind obtained a federal lease for site control to develop approximately 1,500 MW of offshore wind power generation off the coast of Maryland. In 2017, US Wind won an Offshore Renewable Energy Credit (OREC) award to build a 270 MW offshore wind facility in their Lease area. In 2021, US Wind applied to the state of Maryland for additional ORECs of up to 1,200 MW. See [our website](#) for more information.

Ongoing Survey Activities in Maryland Offshore Lease area

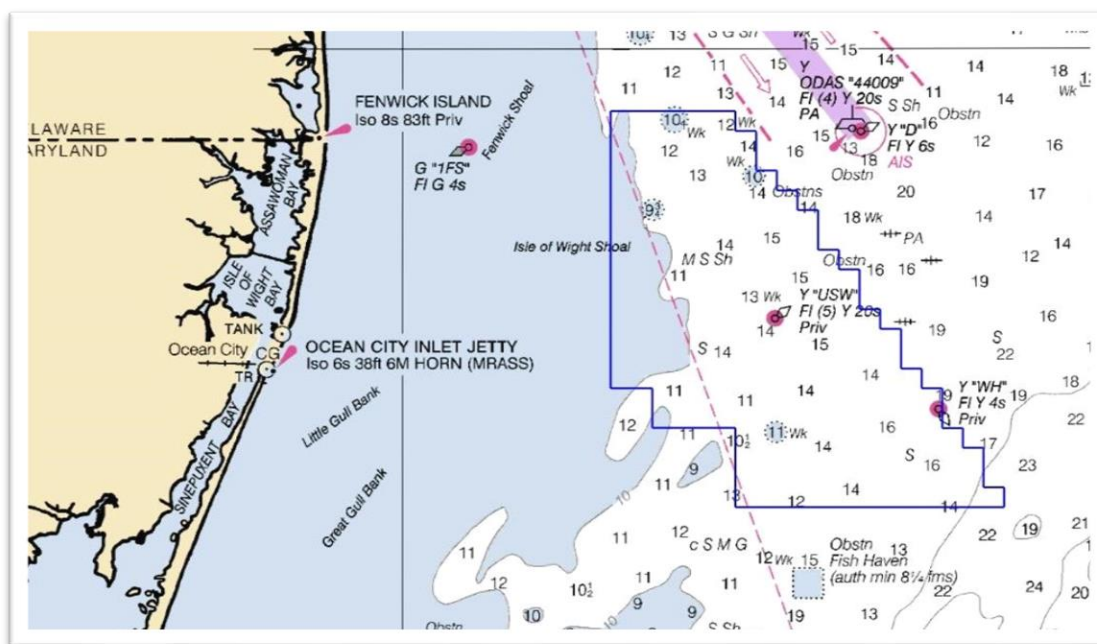


Chart depicting US Wind Lease area off Maryland's coast (not to be used for navigation purposes)



The U.S. flag Research Vessel *Brooks McCall*, operated by TDI Brooks, Inc., continues to conduct shallow geo-technical studies in the US Wind Lease area and should complete their surveys in October 2021. The U. S. flag R/V *Miss Emma McCall* is conducting geophysical survey operations in the area and along the export cable route to acquire data for offshore hazard/site clearance assessments, pipeline/cable routing, seafloor mapping, port and channel conditions, fisheries habitat mapping, and burial assessment studies. Survey activities aboard the *Miss Emma McCall* are expected to continue into November 2021.

US Wind continues to implement extensive efforts to minimize impacts to marine life during survey operations. Expert Protected Species Observers are aboard each vessel to monitor for the presence of protected species, such as the North Atlantic right whale, and to ensure that appropriate measures are taken to protect these species.



R/V Miss Emma McCall – 153 ft LOA; Call Sign: WDG8742; MMSI: 338100000



R/V Brooks McCall – 160 ft LOA; Call Sign: WCZ7811; MMSI: 338257000

Upcoming geo-technical surveys

In late October 2021, the U.S. flag survey vessels *HOS Mystique* and *Tidewater Regulus* will begin geotechnical exploration survey operations within the US Wind Lease area, including boring operations using a mobilized marine drill rig and seabed frame. The vessels will be restricted in their ability to maneuver and will continue survey operations until late February 2022.



PSV HOS Mystique – 250 ft LOA; Call Sign: WDE3118; MMSI: 367334320



PSV Tidewater Regulus – 272 ft LOA; Call Sign: WDG8927; MMSI: 366987000

*****All Mariners transiting or fishing in the survey area are requested to give a wide berth to all survey vessels as they may be limited in their ability to maneuver and may be towing gear out to 300 yards behind the vessel. Vessels in the vicinity of the survey vessels should operate in a manner that will not endanger the vessel or associated equipment*****

For more information, please contact:
Benjamin Cooper, Director of Marine Affairs: b.cooper@uswindinc.com or 410-340-9602