

## US Wind Mariners Briefing – December 10, 2021

US Wind was founded in 2011 and has established its position as Maryland's leader in offshore wind development. In 2014, US Wind obtained a federal lease for site control to develop approximately 1,500 MW of offshore wind power generation off the Atlantic coast of Maryland. See [our website](#) for more information.

### **Update!** Survey Activities in Maryland Offshore Lease Area

After refraining from geophysical survey work during the month of November, US Wind was set to resume geophysical survey work with the **M/V *Fugro Brasilis*** on Monday, December 13, 2021. However, recognizing the challenges that exist for local fishermen to maximize catch during the height of conch season, US Wind will be extending the suspension of our geophysical work until January 1, 2022.

US Wind will continue to conduct geotechnical survey work using the **PSV *Regulus*** in the southeastern portion of the Maryland Lease area beginning on December 15, 2021, which local fishermen have confirmed will not interfere with the conch fishery. US Wind will coordinate with fishermen via our fisheries liaisons and utilize local scout vessels to ensure that all survey operational areas are free of visible fishing gear.



**PSV *Regulus* – 272 ft LOA; Call Sign: WDG8927; MMSI: 366987000**



**M/V *Fugro Brasilis* – 213 ft LOA; Call Sign: C6AP7; MMSI: 311000115**



*\*\*All Mariners transiting or fishing in the survey area are requested to give a ½ mile closest point of approach to all survey vessels as they may be limited in their ability to maneuver. Vessels in the vicinity of the survey vessels should operate in a manner that will not endanger the vessels or associated equipment. Both vessels will monitor VHF channels 13 and 16.\*\**

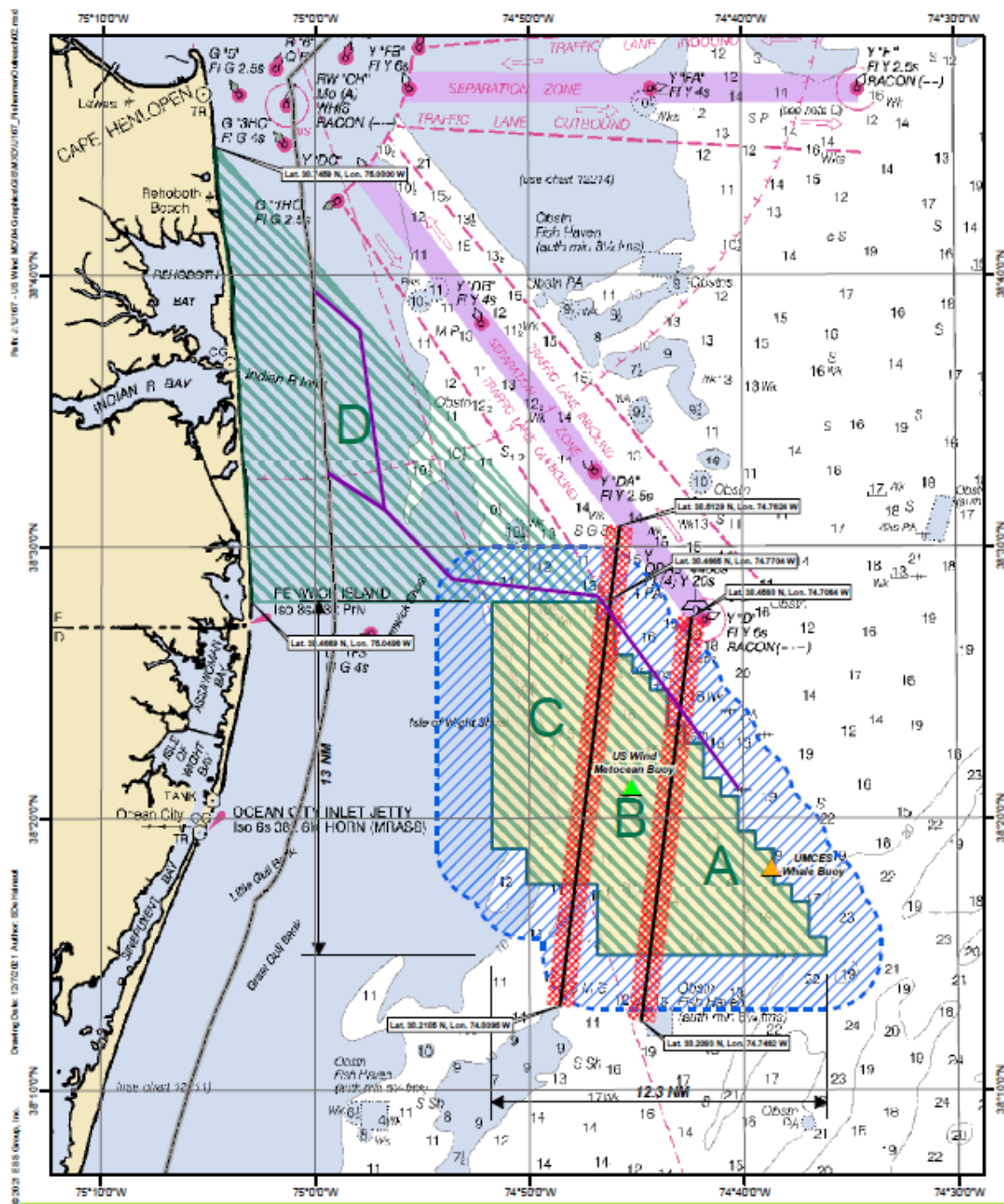
An Offshore Fisheries Liaison will be embedded aboard the **M/V Fugro Brasilis** to share information regarding survey activities, interactions with fishing vessels and gear, and serve as a resource to answer questions. The Offshore Fisheries Liaison can be contacted at [OFL2@Offshorewfs.com](mailto:OFL2@Offshorewfs.com).

US Wind continues to implement extensive efforts to minimize impacts to marine life during survey operations. Expert Protected Species Observers are aboard each vessel to monitor for the presence of protected species, such as the North Atlantic right whale, and to ensure that appropriate measures are taken to protect these species.

-----

Mariners briefings are distributed to interested mariners on the US Wind website at: <https://uswindinc.com/mariners/> or can be requested from Benjamin Cooper, US Wind's Director of Marine Affairs, via email at [b.cooper@uswindinc.com](mailto:b.cooper@uswindinc.com).

You may also wish to contact US Wind's Fisheries Liaison Officers for fisheries specific information (Wolfgang Rain: 206-427-6553; [wrain@searisksolutions.com](mailto:wrain@searisksolutions.com) and Ron Larsen: 570-242-5023; [ronlarsen@searisksolutions.com](mailto:ronlarsen@searisksolutions.com)).



## Maryland Offshore Wind Project Offshore Maryland and Delaware

Source:  
1) NOAA, Chart #12200

- ▲ UMCES Whale Buoy
- ▲ US Wind Meteorological Buoy
- Export Cable Corridor
- SLA 3-Mile Jurisdiction
- Division Line
- US Wind Lease Area
- 2 Nautical Mile Navigation Buffer
- 1 Nautical Mile Division Zone

## US Wind Lease Area

■ Survey Zone

Chartlet depicting survey zones for the US Wind Lease area off Maryland's coast (not to be used for navigation purposes)