

US Wind Mariners Briefing – November 9, 2021

These briefings are intended to update mariners on marine operations in and around the US Wind Maryland offshore wind Lease area. Mariners briefings are distributed to interested mariners on our website at: <https://uswindinc.com/mariners/> or can be requested from Benjamin Cooper, US Wind's Director of Marine Affairs, via email at b.cooper@uswindinc.com.

You may also wish to contact US Wind's Fisheries Liaison Officers for fisheries specific information (Wolfgang Rain: 206-427-6553; wrain@searisksolutions.com and Ron Larsen: 570-242-5023; ronlarsen@searisksolutions.com).

About Us

US Wind was founded in 2011 and has established its position as Maryland's leader in offshore wind development. In 2014, US Wind obtained a federal lease for site control to develop approximately 1,500 MW of offshore wind power generation off the Atlantic coast of Maryland. In 2017, US Wind won an Offshore Renewable Energy Credit (OREC) award to build a 270 MW offshore wind facility in their Lease area. In 2021, US Wind applied to the state of Maryland for additional ORECs of up to 1,200 MW. See [our website](#) for more information.

Ongoing Survey Activities in Maryland Offshore Lease area

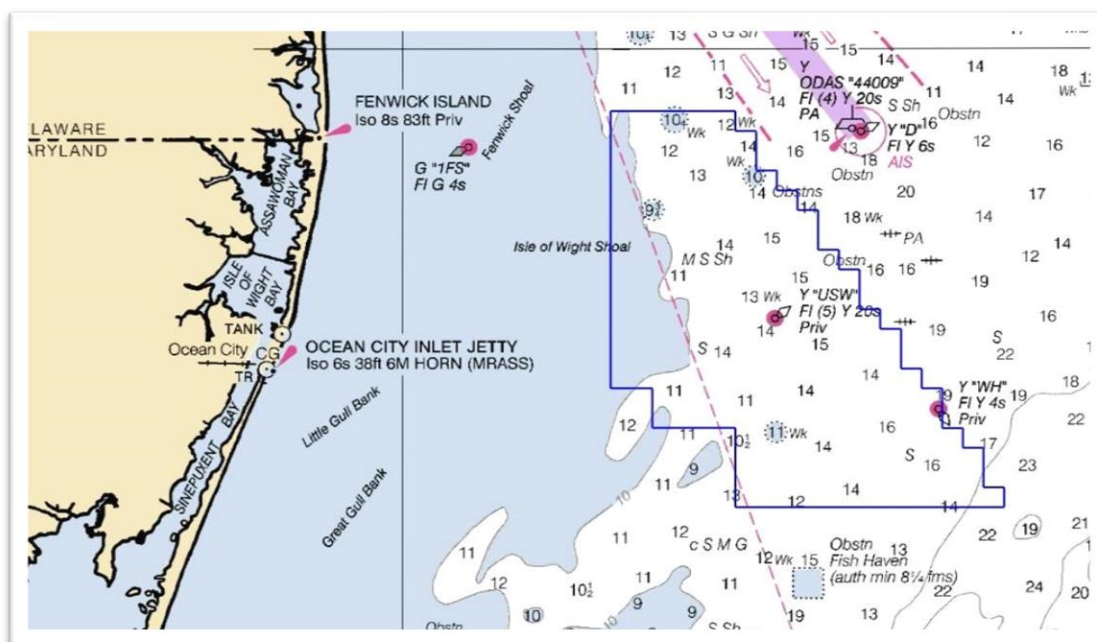


Chart depicting US Wind Lease area off Maryland's coast (not to be used for navigation purposes)

As part of the ongoing site characterization efforts, the survey vessel **MV *Fugro Brasilis***, will begin conducting geo-physical surveys in the US Wind Lease area and along the export cable route in early December 2021. At the same time, the **PSV *Tidewater Regulus*** will also begin geotechnical survey operations in the Lease area conducting boring operations using a mobilized marine drill rig and seabed frame. Survey activities are expected to continue into April 2022.

US Wind continues to implement extensive efforts to minimize impacts to marine life during survey operations. Expert Protected Species Observers are aboard each vessel to monitor for the presence of protected species, such as the North Atlantic right whale, and to ensure that appropriate measures are taken to protect these species.



MV Fugro Brasilis – 213 ft LOA; Call Sign: C6AP7; MMSI: 311000115



PSV Tidewater Regulus – 272 ft LOA; Call Sign: WDG8927; MMSI: 366987000

*****All Mariners transiting or fishing in the survey area are requested to give a wide berth to all survey vessels as they may be limited in their ability to maneuver and may be towing gear out to 300 yards behind the vessel. Vessels in the vicinity of the survey vessels should operate in a manner that will not endanger the vessels or associated equipment.*****

For more information, please contact Benjamin Cooper, US Wind's Director of Marine Affairs at b.cooper@uswindinc.com.